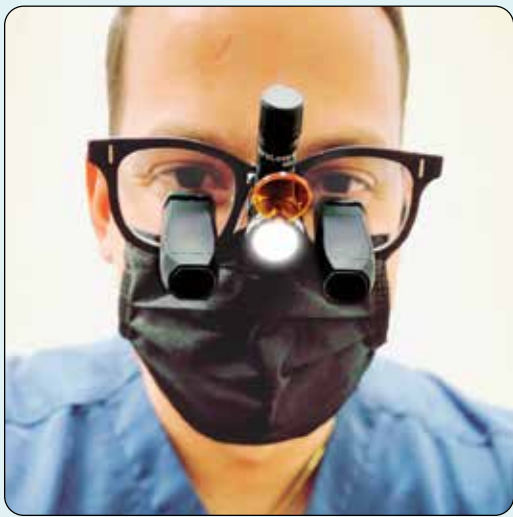




photo by @invinciblesmiles of @yogi_dentist

The Visible Difference®



Double **Your Viewable Field**



Actual Size

Expanded Field Loupes

Panoramic Loupes



3.5x



4.5x

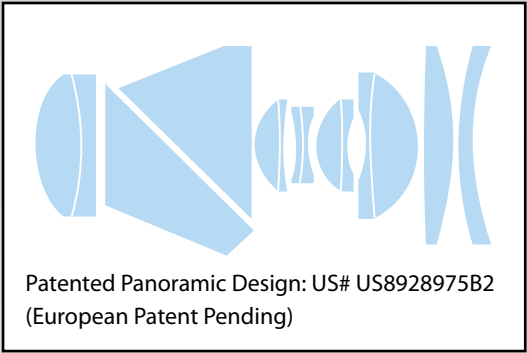


Panoramic Loupes

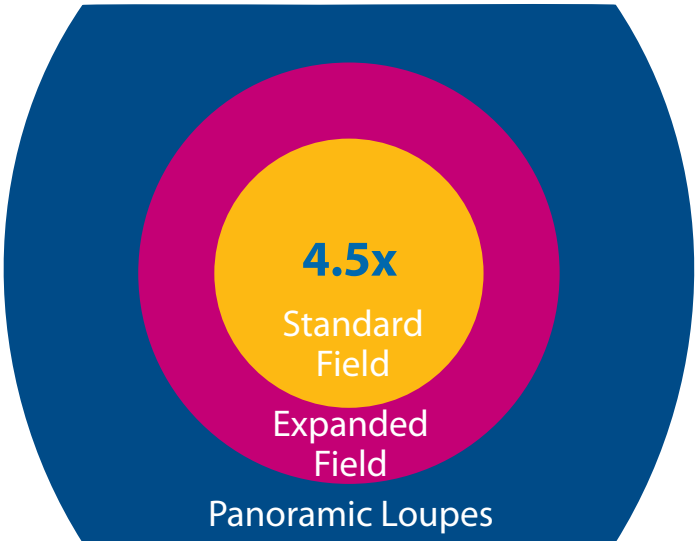
The first advancement in telescopic optics in 100 years



See the bigger picture with the new patented panoramic field design, doubling the viewable area over prismatic expanded field optics. Designs for Vision's new panoramic loupes provide precision magnification with an unprecedented field of view.



Loupes	3.5x Expanded Field	3.5x Panoramic Field	4.5x Expanded Field	4.5x Panoramic Field
Viewable Area	50 cm ²	100 cm ²	24 cm ²	65 cm ²
Field Diameter	8 cm	11.1 x 9 cm	5.5 cm	9 x 7 cm
Angle of View	14°	20°	9°	16°



Panoramic Loupes DOUBLE the Viewable Area over **Prismatic Expanded Field** optics, and more than QUADRUPLES the viewable area over **Galilean Standard Field** optics

Classic **Surgi-Spec®** Loupes



Loupes	2.5x
Viewable Area	50 cm ²
Field Diameter	8 cm
Angle of View	14°



Loupes	3.0x
Viewable Area	38 cm ²
Field Diameter	7 cm
Angle of View	11°



Loupes	3.5x
Viewable Area	20 cm ²
Field Diameter	5 cm
Angle of View	8°



Expanded Field **High-Vision** Loupes



Loupes	3.5x-EF
Viewable Area	50 cm ²
Field Diameter	8 cm
Angle of View	14°



Loupes	4.5x-EF
Viewable Area	24 cm ²
Field Diameter	5.5 cm
Angle of View	9°



Loupes	6.0x-EF
Viewable Area	12.5 cm ²
Field Diameter	4 cm
Angle of View	6.5°



photo courtesy of @abhaydalal

Lightweight **Micro-EF Scopes**

Prismatic Expanded Field Loupes

NEW 3.0EF

**50% Smaller
and
40% Lighter**

**44% Smaller
and
44% Lighter**

Loupes	Micro3.0EF
Viewable Area	78 cm ²
Field Diameter	10 cm
Angle of View	16°

Loupes	Micro3.5EF
Viewable Area	44 cm ²
Field Diameter	7.5 cm
Angle of View	12°

Loupes	Micro4.5EF
Viewable Area	20 cm ²
Field Diameter	5 cm
Angle of View	8°



**Compare
Magnifications**



Micro3.5EF shown here
and Micro 4.5EF



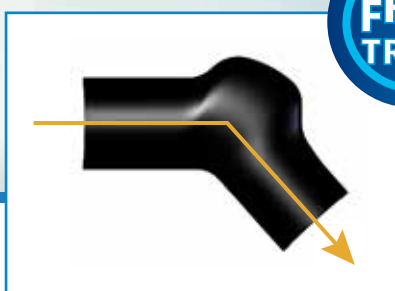
NEW



Infinity VUE™

↑ Vision Up Ergonomics

Introducing a straight-forward approach to ergonomics. Infinity VUE™ Loupes keep your chin up, your neck straight and your eyes looking forward while viewing the magnified oral cavity.



- New Vision Up Ergonomics
- Available in 3.0x, 3.5x and 4.5x magnification
- Custom Built to your unique measurements
- Precision Coated Optics
- 45 Day Free Trial

NEW 4.5x Infinity VUE™ Loupes



Infinity VUE™ 3.5x shown with
LED DayLite® WireLess Mini HDi



Infinity VUE™ 3.0x shown with
LED DayLite® Micro HDi

Document – Broadcast – Record with

LED NanoCam

DOCUMENT Easy to use, bluetooth enabled wireless footpedal for hands-free operation. Digitally insert HiDef video and images into patient record.

BROADCAST Transmit real time first person view.

RECORD Record dentist's point of view. Easy to use DBR software with HIPAA compliance and 24/7 support.



LED NanoCam 4K

Lightweight 24g
4K, 1080P resolution
13 megapixels
Two Magifications:
16mm 2.0x and 25mm 3.0x
Superior Low-Light Performance

LED NanoCam GO

Lightest weight 16g
1080P, 720P resolution
3.4 megapixels
Two Magifications:
16mm 2.0x and 25mm 3.0x
Android Compatible for mobile
or rapid sharing applications



Learn More

*New camera sensor reduces auto exposure and blooming
in bright light, providing excellent recording/photo ability*

Award Winning **HDi** High Definition Imaging



without HDi

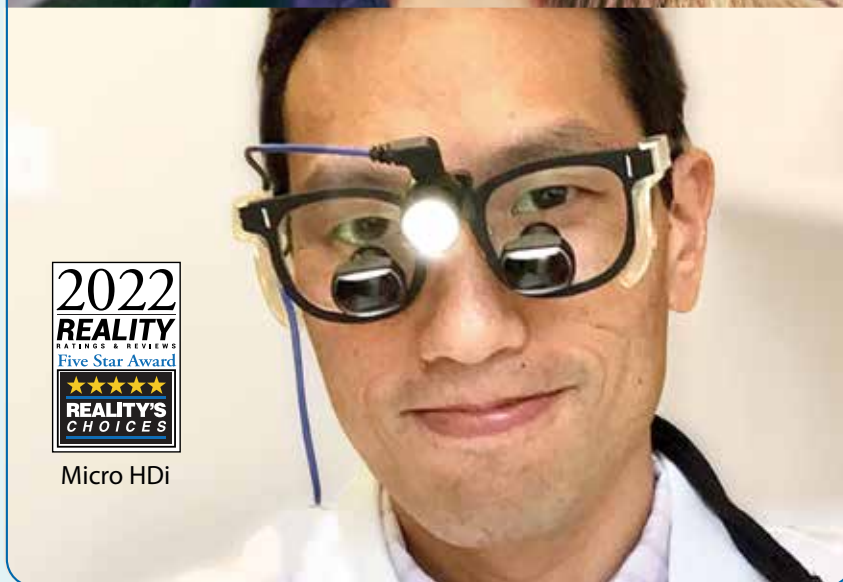


with HDi

- Advanced photonic design
- Uniform light distribution
- 45% more light
- WireLess and Corded Options



WireLess Mini HDi



Micro HDi

LED DayLite® HDi Headlights
DesignsForVision.com/DentHtml/D-LED/D-Lights.htm



Learn More



Designs for Vision, Inc.

4000 Veterans Memorial Hwy. • Bohemia, NY 11716-1024 • 1.631.585.3300

1.800.345.4009 • info@dvimail.com • DesignsForVision.com

    @Designs4Vision